



L1: INTRODUCTION

Getting started with Stata

Angela Ambroz

May 2015

Today

- Admin
- What is Stata?
- Basics of the basics

Admin

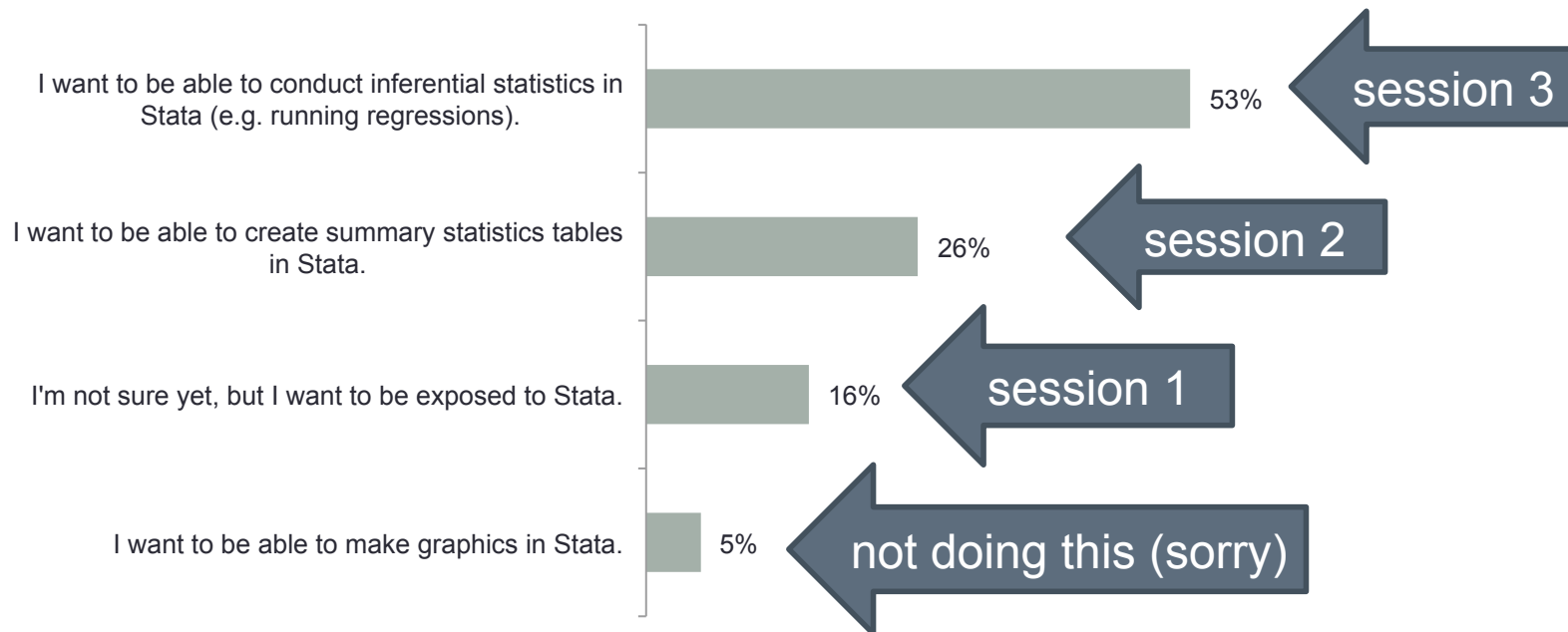
- 3 lectures
- Homework assignment for each lecture
- Course website: www.angelaambroz.com/stata.html
- 24/7 Support: Skype group chat – CUPCAKE PROMISE
- Make sure you have Stata 10 on your computer
- **Confused? Interrupt me!**

GOAL:

Not being scared/intimidated by Stata. Understanding the basics of how Stata operates. Being able to write and understand .do files.

Pre-course survey results

- 74% of you have used Stata before
- 53% of you knew what `browse` does
- 95% of you have used Excel
- 74% of you have used SPSS



Why do we use Stata?

Pros	Cons
- Logistics: Easy to learn, cross-platform, industry standard!	- Working with very large datasets (multiple GBs)
- Analysis: Many of our most useful tools are built-in and ready to use (e.g. power calcs)	- Making graphs/tables is time-consuming (faster in Excel)
- Reproducible research: Stata is command-driven, saved in .do files	- Pricey
- Flexibility	

The basics

The screenshot displays the Stata software interface with four main windows:

- Review:** A table with columns 'Command' and '_rc'.
- Results:** Displays the Stata startup screen, including the Stata logo, version 11.2, copyright information (2009 StataCorp LP), address (4905 Lakeway Drive, College Station, Texas 77845 USA), contact information (800-STATA-PC, 979-696-4600, http://www.stata.com, stata@stata.com), and a single-user perpetual license for Angela Ambroz at Abdul Latif Jameel Poverty Action Lab (J-PAL). It also shows a note about 10.00 MB of data allocation and a warning that the update check failed because the host was not found.
- Variables:** A table with columns 'Name' and 'Label'.
- Command:** A window for entering Stata commands.

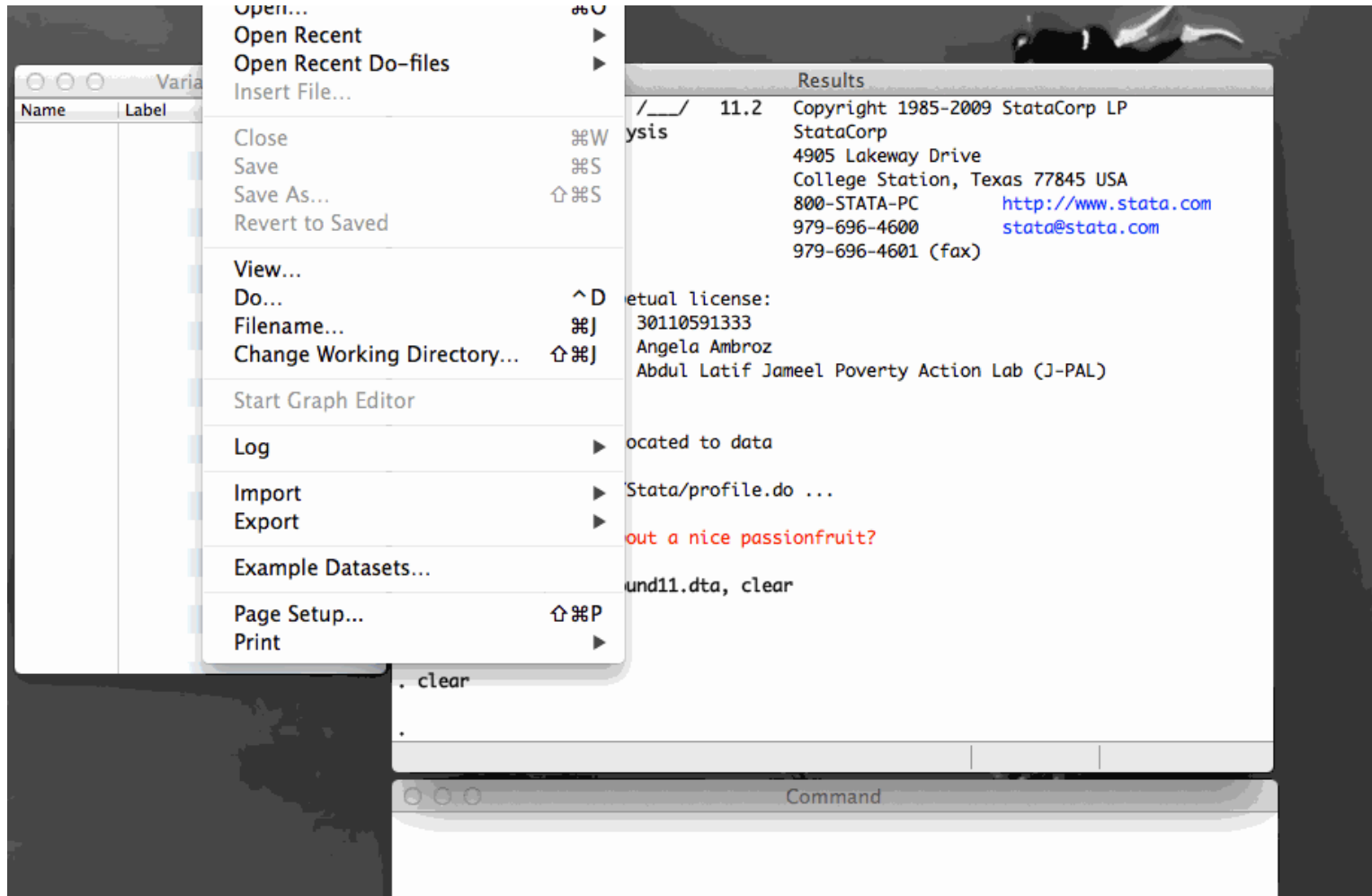
The 'An example' window on the right shows the following code:

```
1 *Preamble*
2
3 clear
4 set more off
5 set mem 500m
6
7 *Getting some data to work with*
8
9 insheet using "CSV/FirstEntry.csv", comma double clear
10
11 di _N
12
13 save Raw/FirstEntry.dta, replace
14
15
```

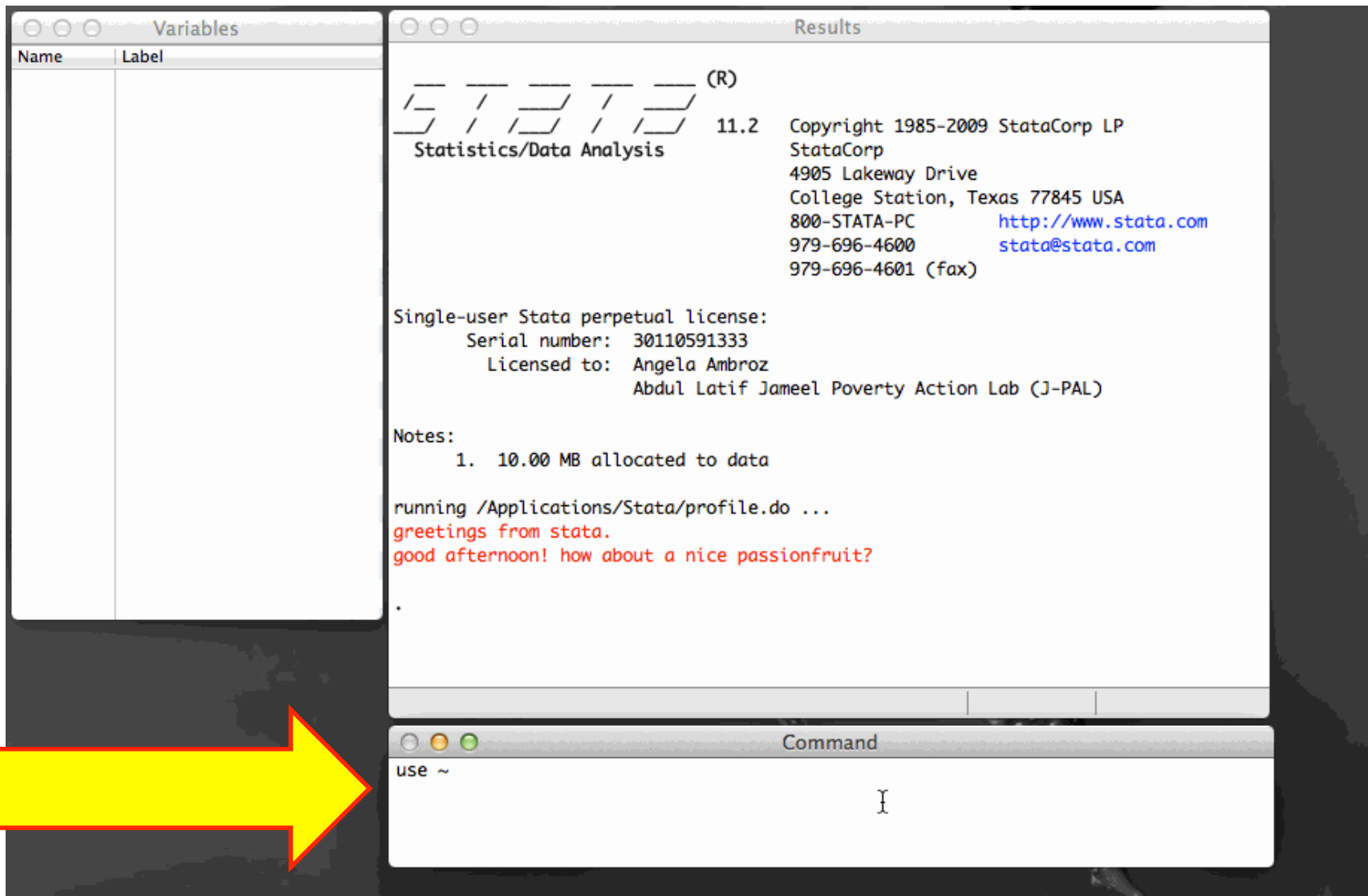
How to talk to Stata

- Stata has both a command-line and graphical user interface
- It uses a specific syntax, similar to programming languages
- Most people write commands in a .do file, save it, and then run it

Graphical user interface



Command line interface

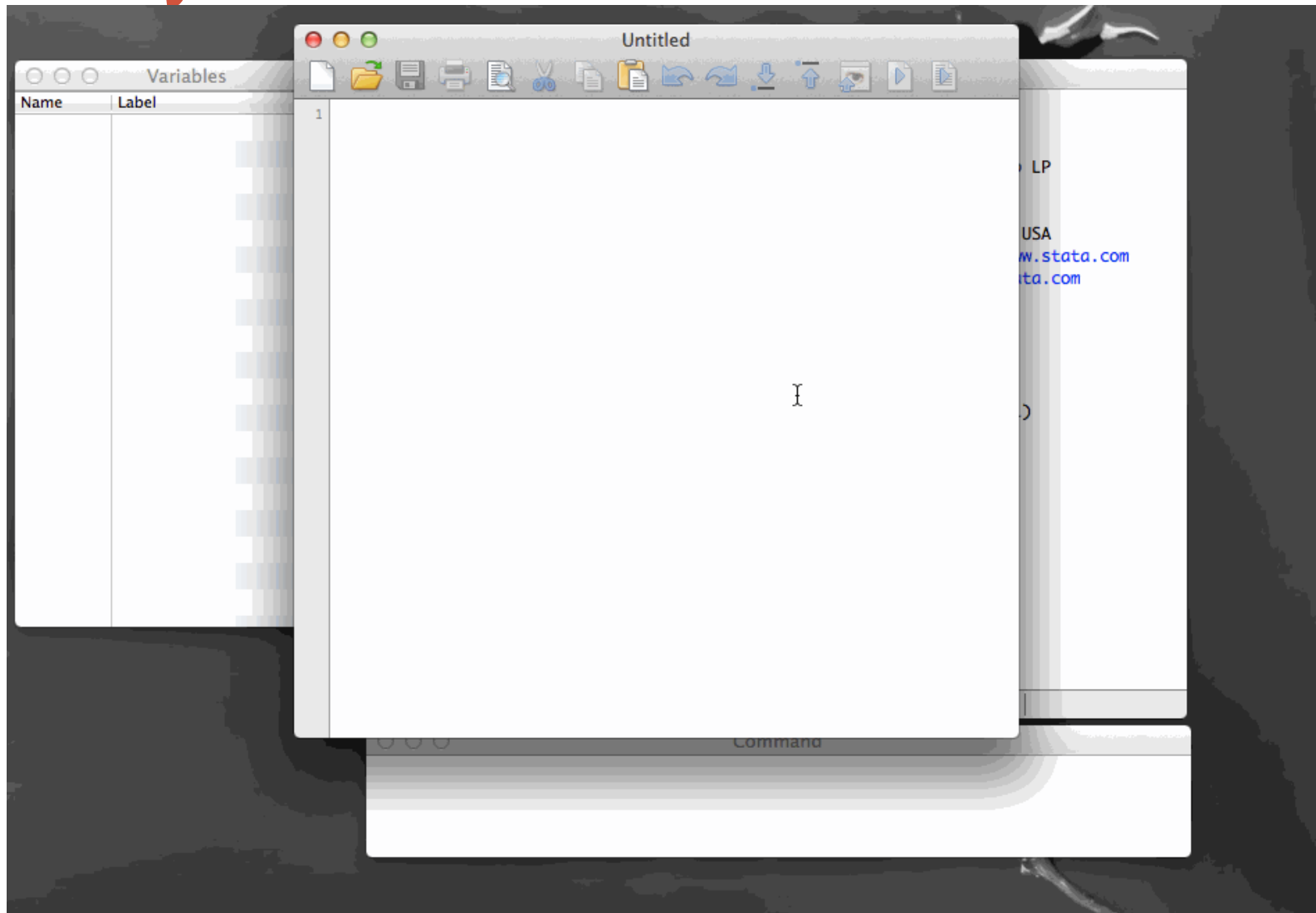


The screenshot displays the Stata command line interface with three windows:

- Variables window:** A table with two columns: Name and Label.
- Results window:** Displays the Stata logo (R), version 11.2, and copyright information for StataCorp LP. It also shows the license details for Angela Ambroz at Abdul Latif Jameel Poverty Action Lab (J-PAL) and a note about 10.00 MB allocated to data. The output includes the text: "running /Applications/Stata/profile.do ... greetings from stata. good afternoon! how about a nice passionfruit?"
- Command window:** Shows the prompt "use ~" and a cursor.

A large yellow arrow points from the left towards the Command window.

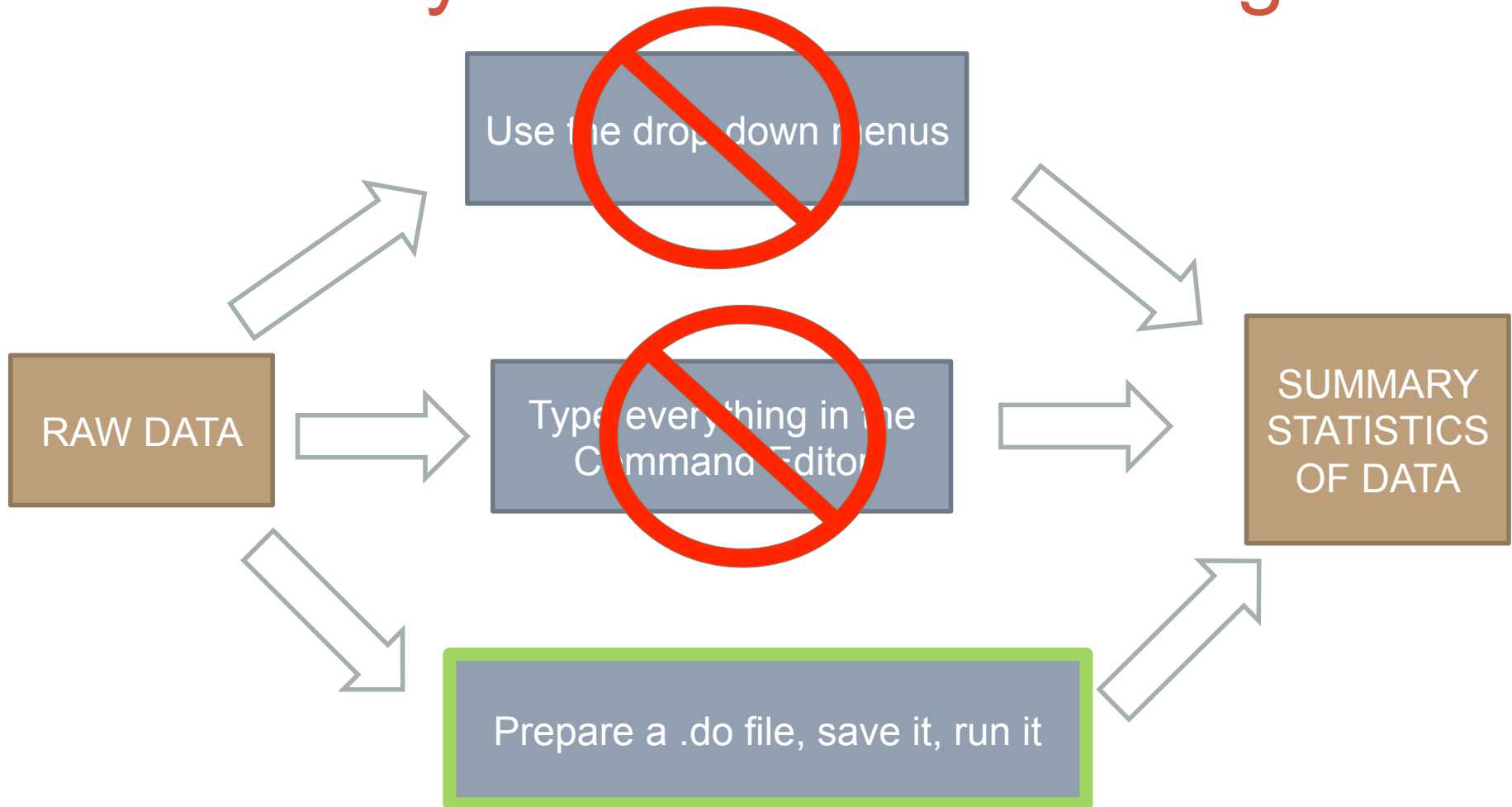
Save your commands: .do files



What is a .do file?

- A .do file is a **plain text file** where you save your Stata commands.
- It's kind of like a **mini program**.
- Saving commands in a .do file makes sure that your work is **reproducible and understandable**.
- Added bonus: you can do and save your analysis in a .do file **without altering the dataset!** (unlike Excel)

Three ways to do the same thing



Word to the wise

Best practice

Test ideas in the
Command Editor window

Do your analysis (and save
it!) in a .do file!

How does Stata see data?

- Stata won't show you the data *unless you explicitly ask it* (via browse)
- Data can be either:
 - `numeric: -1, 0.31495, 30000`
 - `string: "Angela", " Dar es Salaam", "1,000", "1/4", " "`
 - Encoded: `100 ("Dar es Salaam")`
- Missing values show up as `.` (numeric) and `" "` (string)

How does Stata see data?

variable name	storage type	display format	value label	variable label
uhn	int	%10.0g		unique household number
EA	int	%10.0g	ea	Enumeration Area
hh_hasphone_b1	byte	%9.0g		hh had phone at baseline
hhsize	byte	%9.0g		nr of hh members from roster
resp_urban	byte	%9.0g	urb_lab	Respondent urban
resp_farmer	byte	%9.0g	Farm_lab	Respondent is farmer
resp_male	byte	%9.0g	male_lab	Respondent is male
comp_std7	byte	%30.0g	st7lab	Completed Standard 7 or higher
comp_form4	byte	%26.0g	fr4lab	Completed Form 4 or higher
quin_asset_we~h	byte	%10.0g	assetq_lab	wealth quintiles



Variables
The questions in your questionnaire

Values
The answers in your questionnaire

Labels
Meta-data on your questions and answers

How to talk to Stata (via commands)

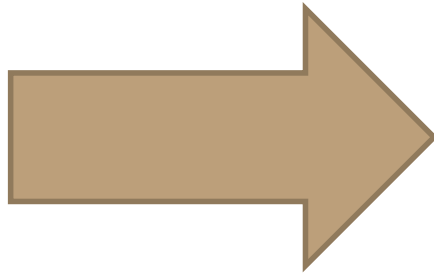
- There are **thousands*** of official Stata commands
- There are **hundreds*** of unofficial, user-written Stata commands (.ado)
- There is **no point** in trying to memorize a lot of commands – this is a giant waste of time
- Instead, memorize only one:

help

* I think, I'm not actually sure.

How to use “help”

You type `help browse`, and Stata will open this:



A key Stata skill:
Learning how to
read and understand
“help” files

Title

[D] edit — Browse or edit data with Data Editor

Syntax

Edit using Data Editor

edit [varlist] [if] [in] [, nolabel]

Browse using Data Editor

browse [varlist] [if] [in] [, nolabel]

Menu

edit

Data > Data Editor > Data Editor (Edit)

browse

Data > Data Editor > Data Editor (Browse)

General syntax structure

- Stata's commands following **programming conventions**.
- As such, they use **logic symbols (&, <, >, etc.)**
- Variable names never have spaces
- Variable names never start with numbers
- Strings always have **"quotes around them"**
- All commands can be shortened:

```
g  
b  
ta
```

General syntax structure: Logic symbols

This...	means this...	Example
+ - * /	Add, subtract, multiply, divide	
=	Assignment	<code>generate weekly_amount = daily_average * 7</code>
==	Equals	<code>browse if region=="Dar es Salaam"</code>
!=	Does not equal	<code>browse if region!="Dar es Salaam"</code>
>=, <=, >, <	Greater/Less than	<code>browse if age<=5</code>
&	And	<code>browse if age<=5 & gender=="Female"</code>
	Or	<code>browse if party=="CHADEMA" party=="CUF"</code>

In-class exercise

Let's now take 5-10 minutes, and translate this into English:

```
gen adult_respondent=1 if  
age>=18 & name!=""
```

hint: help...

Homework

- homework1-1.do - Read and explain a simple .do file (written by someone else)
- homework1-2 (online Google form) – Practice writing and running some simple commands
- **Goal:**
 - To be able to open a .do file
 - To get familiar with the different windows in Stata
 - To be able to use and understand the “help” command
 - To start writing your first commands
- Questions? E-mail/Skype.
- Finished? E-mail me your .do file. Fill out the Google form.
- **DEADLINE: COB Monday, May 18, 2015**